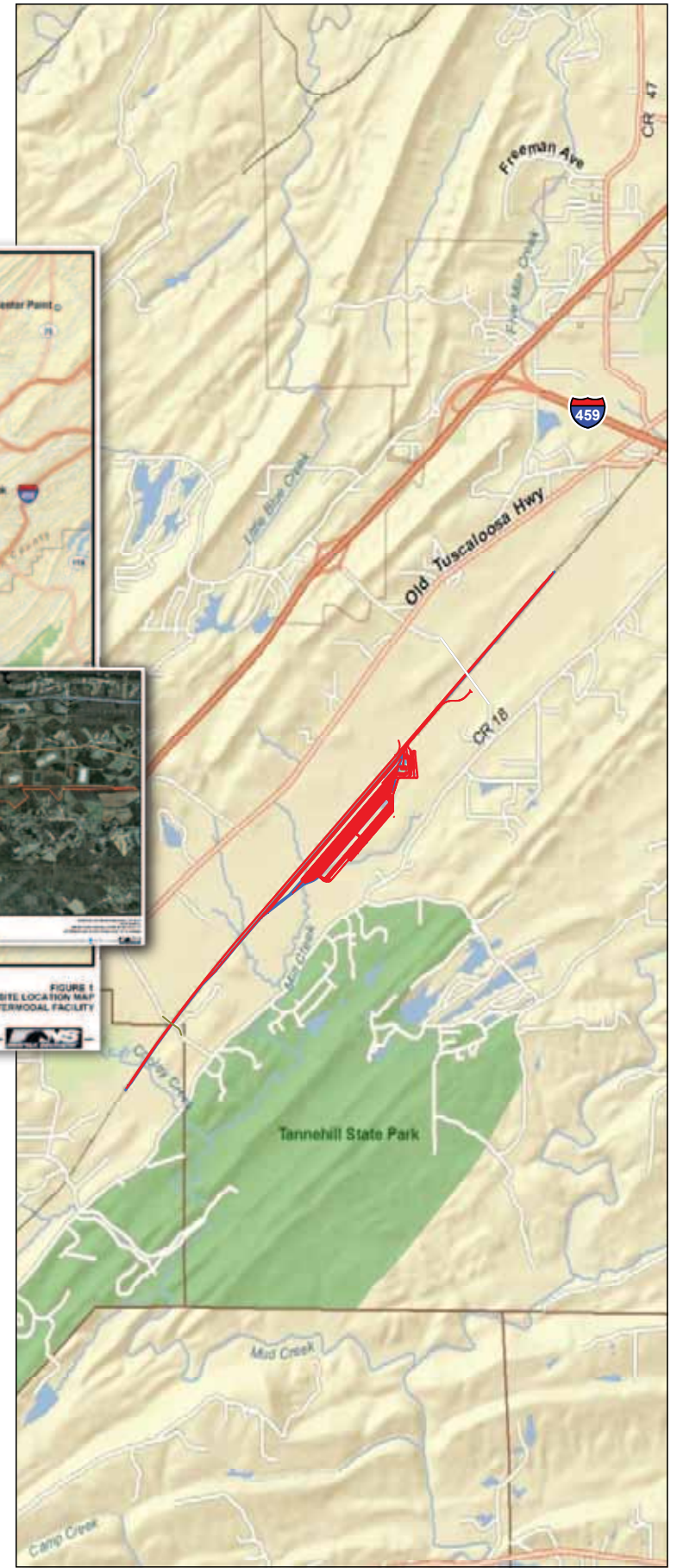


PROJECT LOCATION



ALABAMA AND NORFOLK SOUTHERN

- 1,372 route miles in Alabama.
 - \$13.7 million in state and local taxes paid in Alabama annually.
 - 1,700 employees and \$97 million payroll in Alabama.
 - 600 employees in Birmingham area.
 - NS attracted \$8.88 billion in investment in new or expanded industries in Alabama over the last 10 years, creating an estimated 13,600 jobs.
- NS collaborated with Alabama on the ThyssenKrupp project (Mobile County).

BIRMINGHAM REGIONAL INTERMODAL FACILITY



BIRMINGHAM REGIONAL INTERMODAL FACILITY

A GREENER CONNECTION TO THE WORLD'S MARKETS AND OUR COMMUNITIES

In 2009, Jefferson County was selected as the location for a new intermodal facility. The new terminal will bring goods to stores and homes, create thousands of jobs, and reduce the nation's carbon footprint and dependence on foreign oil.



ALABAMA AND THE CRESCENT CORRIDOR

- The Birmingham intermodal terminal will be part of Norfolk Southern's Crescent Corridor, a 2,500-mile rail route that will link key markets in the Northeast and Southeast with high-quality intermodal rail services.
- Norfolk Southern is enhancing its existing rail lines to enable it to provide truck-competitive service and take more than a million trucks off highways such as I-20 and I-59 annually. The enhancements include straightening curves, adding passing tracks, double tracks, and signals, and building intermodal terminals in Alabama, North Carolina, Pennsylvania, and Tennessee.

INTERMODAL TRANSPORTATION

- Uses rail for long-distance shipping. Trucks continue to be used for shorter deliveries.
- Saves energy and reduces carbon: A typical intermodal train hauls 280 truckloads of freight and moves a ton of freight 480 miles on one gallon of fuel.
- Reduces highway congestion and large truck/vehicle accidents.
- Freight moves in the same type of enclosed containers or trailers used at retail stores and businesses.
- Safest, most efficient, and economical way to move freight.
- Computers, televisions, other electronics; medical, health, and personal products like toothpaste; food, sporting goods, toys, paper products, clothes, furniture, appliances, textiles, mail, and auto parts all move on the country's intermodal network.
- Toxic inhalants (such as chlorine) are not handled at intermodal facilities.

SITE SELECTION CRITERIA FOR INTERMODAL TERMINALS

- Adjacent to the main rail line.
- Large, relatively flat land with minimal streams and wetlands, minimizing impact to protected habitats or species.
- Minimal interference with automobile traffic.
- Convenient access to major highways saves fuel and reduces congestion.
- Locality with potential for additional economic development. Community interest in jobs and green freight transportation alternatives.

MCCALLA, JEFFERSON COUNTY SITE

- NS conducted an extensive site search of the Birmingham region for a suitable location for domestic Crescent Corridor traffic.
- The McCalla site was the only available site that met all the necessary criteria.
- Location will also allow for improved intermodal service between the Gulf Coast and the Northeast, as well as from southern California to Southeast U.S. seaports, providing the region with access to the global marketplace.
- Access to I-20/59 is 1.4 miles from the terminal over an existing truck route that avoids residential neighborhoods.
- The site's proximity to the Jefferson Metropolitan Park at McCalla offers expanded logistics, warehousing, and distribution opportunities.

JOBS AND ECONOMIC BENEFITS

- Intermodal terminals have proven to be a powerful engine of growth.
- Since opening in 1989, a facility at the Virginia Inland Port in Front Royal, Va., similar to the one planned for Birmingham, has resulted in:
 - ◆ 27 major companies locating nearby.
 - ◆ \$599 million of investment.
 - ◆ 7,000 new jobs.

What is an Intermodal Facility?

Intermodal Facility- A rail terminal for transferring freight from one transportation mode to another, in this case between trains and trucks, without handling the freight itself when changing modes.



- A parking pad with a gate system to control truck entry and exit
- Vehicles that can move containers to and from trains and trucks
- Administrative and maintenance buildings

ALABAMA ECONOMIC BENEFITS (BY 2020)

- Creates or benefits 8,600 jobs.*
 - Cumulative 10-year economic impact of over \$4 billion.*
- * (primarily in Bibb, Blunt, Chilton, Jefferson, St. Clair, Shelby and Walker Counties)

BIRMINGHAM INTERMODAL TERMINAL

- Target opening in 2012.
- Located within a 316 acre site.
- Three loading tracks.
- Environmentally designed to minimize light and sound spillover.
- Storm water drainage system will comply with state and federal water quality regulations.
- Total project cost is expected to be \$97.5 million.
- Capacity to handle 165,000 truck trailers and shipping containers annually.

TIMELINE MOVING FORWARD

- April 15, 2011 – Groundbreaking Event at former Rosser property in McCalla.
- May 2011 – Construction begins on BRIMF.
- Late 2012 – BRIMF is complete and open for business.

ABOUT NORFOLK SOUTHERN

- Serves most of the U.S. east of the Mississippi River.
- Most extensive intermodal network in the East.
- NS has won the rail industry's highest award for employee safety – the E. H. Harriman Memorial gold medal – for each of the last 20 years.
- Employs environmentally sensitive management of land, water, and property resources.
- Websites: www.nscorp.com; www.thefutureneedsus.com